



SMARTair™

SMARTair™

Proximity Wall Reader for Elevators

25YEAR

MECHANICAL
WARRANTY



ASSA ABLOY

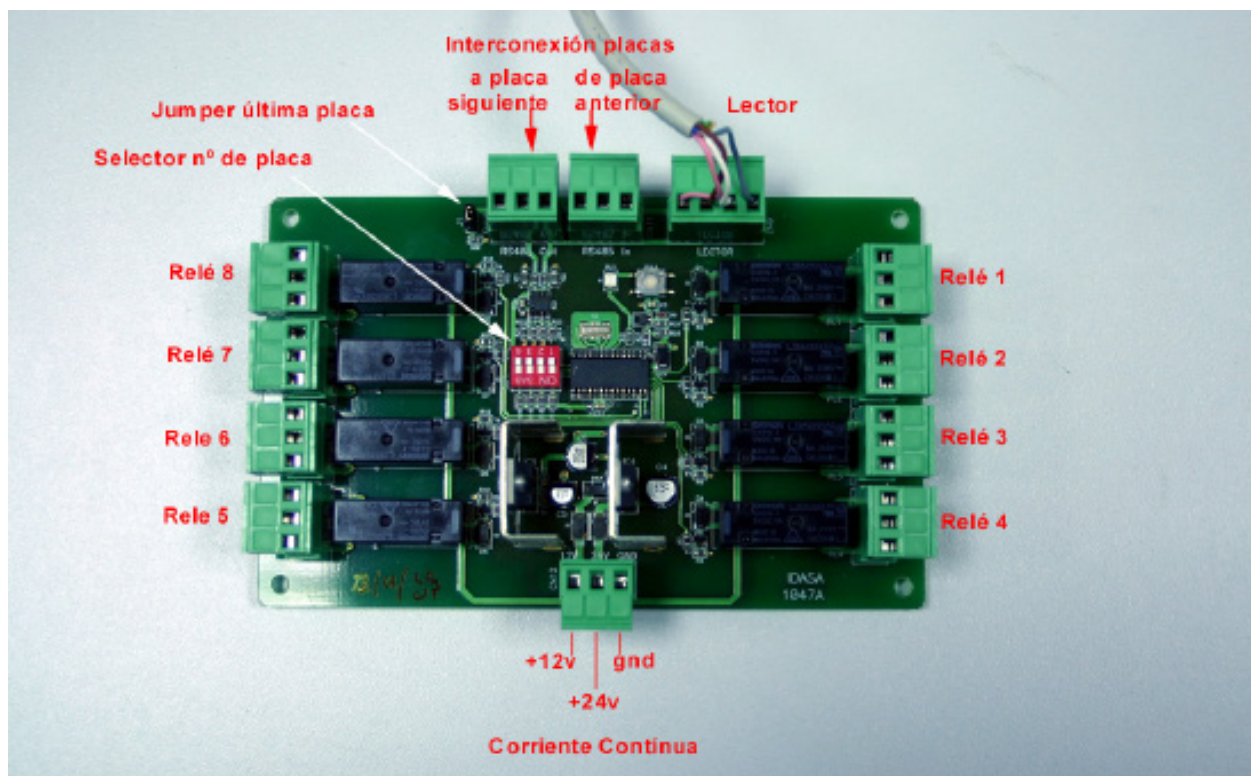
www.assaabloy.co.nz

Relay Card Description

Each relay card have the following inputs / outputs:

The difference between a "User" and an "Operator" of the system is:

- 8 relay outputs marked from 1 to 8
- 1 supply input 12/24VDC
- 1 connector for the connection of the proximity wall reader
- 1 connector IN and 1 connector OUT to connect several relay cards.
- 4 micro switches to determine the number of the relay card
- 1 RESET pushbutton
- Jumper J1, only put in the last relay card

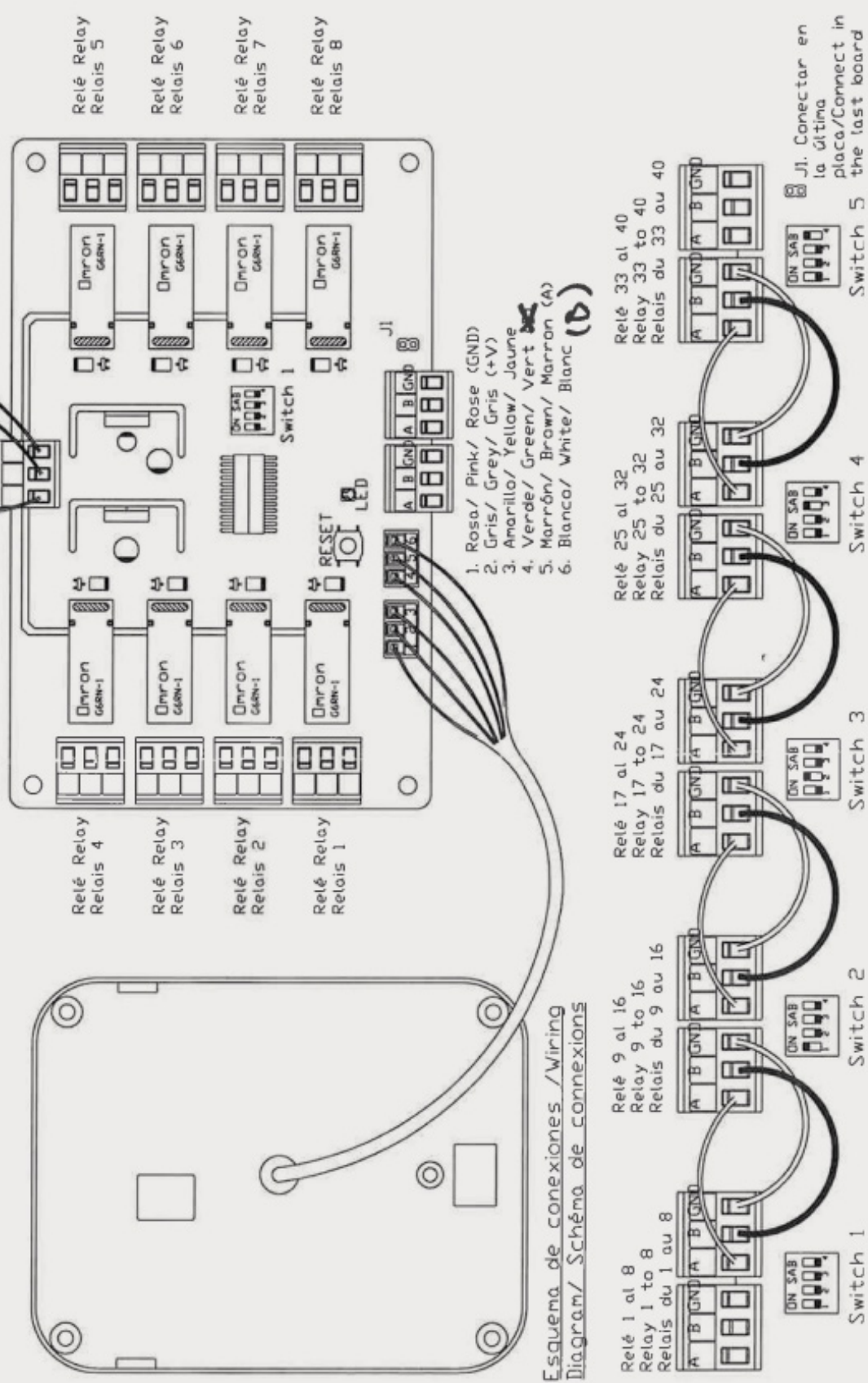


Connection of several relay cards

A proximity wall reader can manage up to 40 floors, that means that we can connect up to 5 relay cards. The connection between the different relay cards is the following:

- The proximity card is connected to the zero relay card to the input marked as LECTOR.
- The micro switches of the zero relay card have to be in the OFF position.
- The output marked as RS485 OUT of this card has to be connected to the input marked as RS485 IN of the following relay card, that we call ONE.
- The micro switches of the ONE relay card have to be: the first one in ON position and the other ones in OFF position.
- The output marked as RS485 OUT of the ONE relay card have to be connected to the input marked as RS485 IN of the relay card named TWO.
- The micro switches of the TWO relay card have to be: the second one in ON position and the other ones in OFF position.
- Connect the different relay cards as related above
- The last relay card named FOUR will have the jumper J1 mounted.

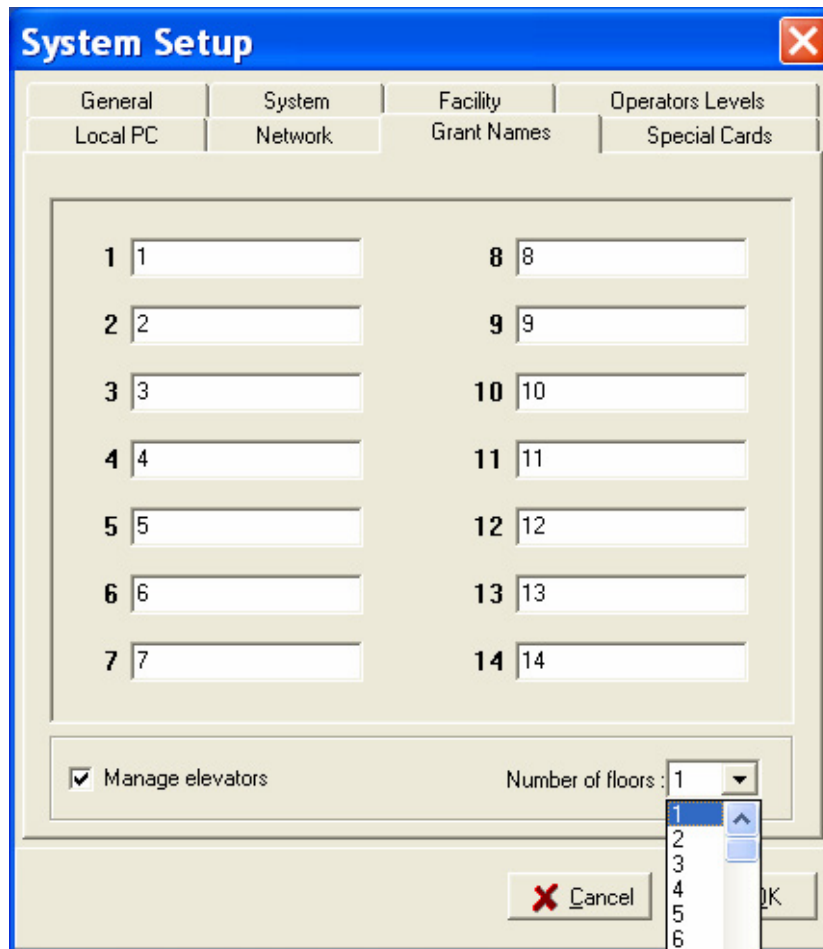
12V DC ó 24V DC / 12V DC or 24V DC / 12V DC ou 24V DC
 Cada placa será alimentada por una fuente independiente (mín. 1A) / Each board is powered by an independent power supply / Chaque plaque devra être alimentée par une source différente



Esquema de conexiones / Wiring Diagram / Schéma de connexions

Programming

Select the menu SET UP, select the menu GRANT NAMES and activate the option Manage Elevators. Select how many floors will you manage:



The screenshot shows the 'System Setup' dialog box with the 'Grant Names' tab selected. The dialog has a blue title bar with a close button. Below the title bar are four tabs: 'General', 'System', 'Facility', and 'Operators Levels'. The 'System' tab is active, and within it, the 'Network' sub-tab is selected. The main area contains two columns of input fields, numbered 1 through 14. Each field contains the number corresponding to its label. Below these fields is a checkbox labeled 'Manage elevators' which is checked. To the right of the checkbox is a dropdown menu labeled 'Number of floors' with the value '1' selected. A mouse cursor is hovering over the dropdown, and a list of numbers from 1 to 6 is visible. At the bottom right, there are 'Cancel' and 'OK' buttons.

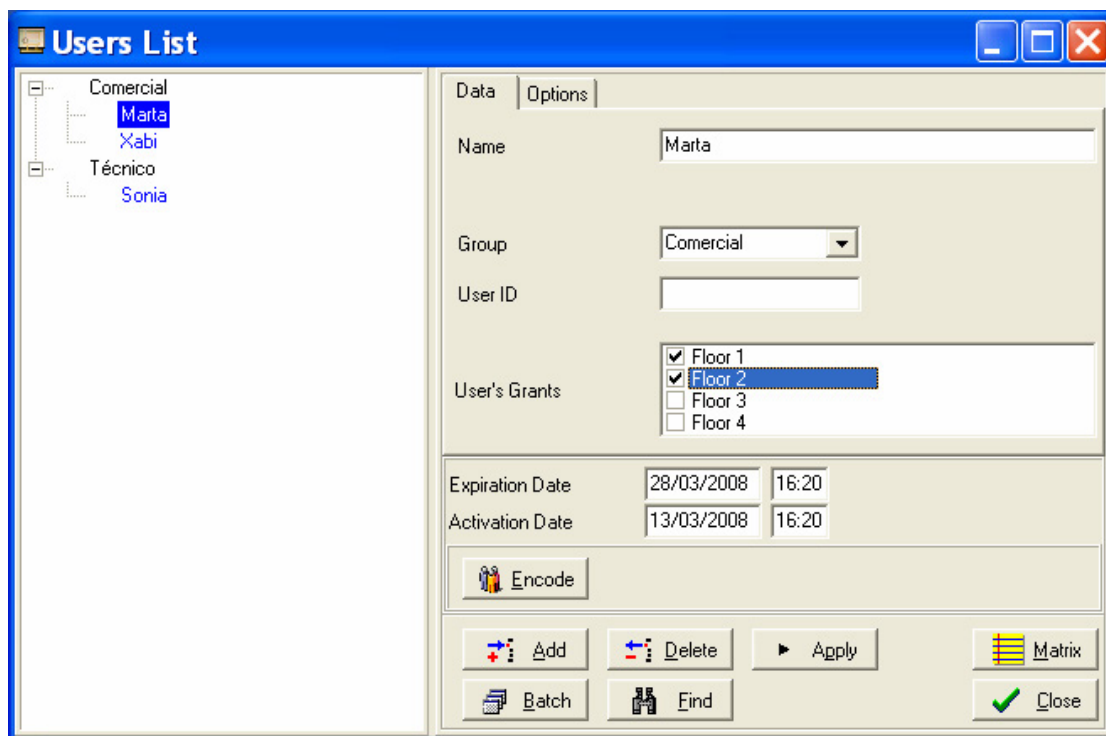
General	System	Facility	Operators Levels
Local PC	Network	Grant Names	Special Cards

1	1	8	8
2	2	9	9
3	3	10	10
4	4	11	11
5	5	12	12
6	6	13	13
7	7	14	14

Manage elevators Number of floors : 1

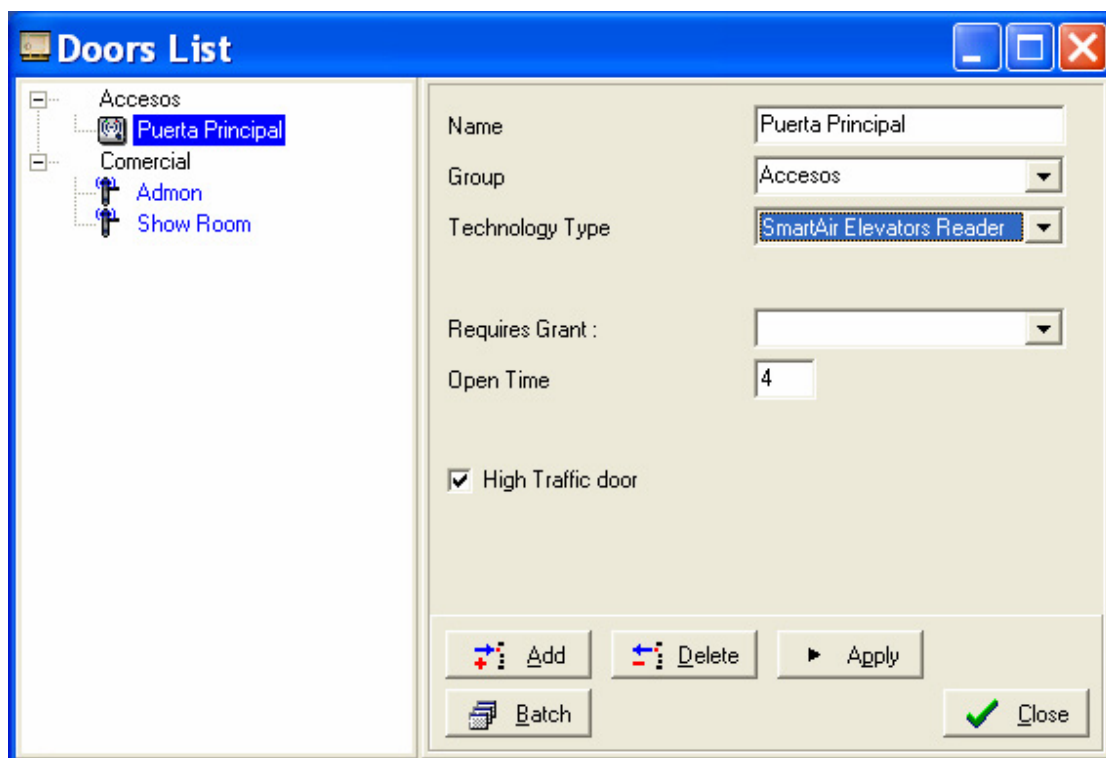
Cancel OK

In the users menu give the grants necessary to each user:



For example, the user MARTA will have only access to floors 1 and 2. That means that when approaching her card to the proximity reader she will only find active the buttons 1 and 2. The rest of the buttons of the elevator will not be active.

Then create a new door as a Smartair Elevators Reader (by default the high traffic door will activate, do not change it). It is advisable to schedule a time of openness that will enable the user from submitting the card to decide what floor he want.



Finally update the PP and then initialize the wall reader.

NOTE: The firmware of an elevator wall reader is different from the firmware of the off line wall reader. And it only can be changed at our factory.