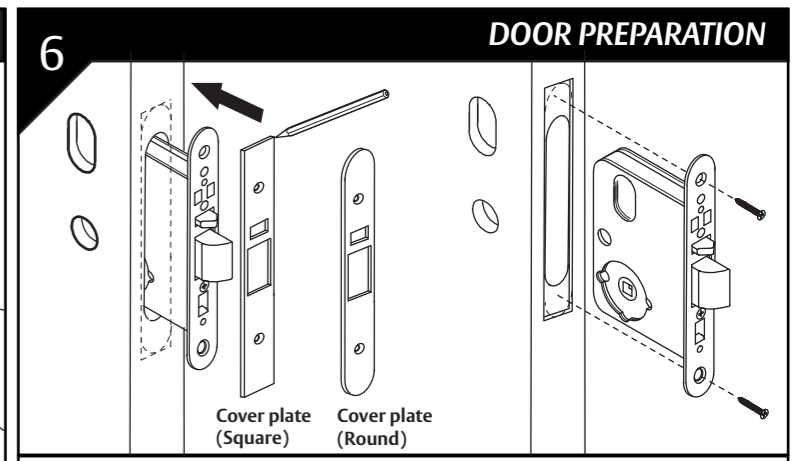
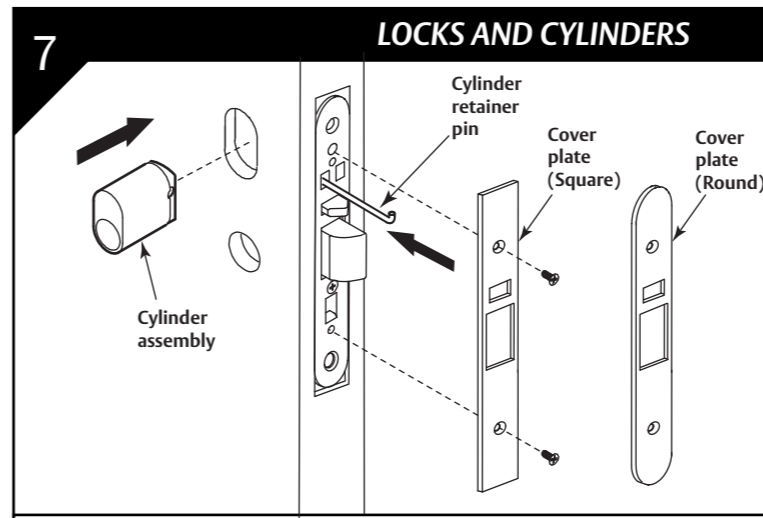


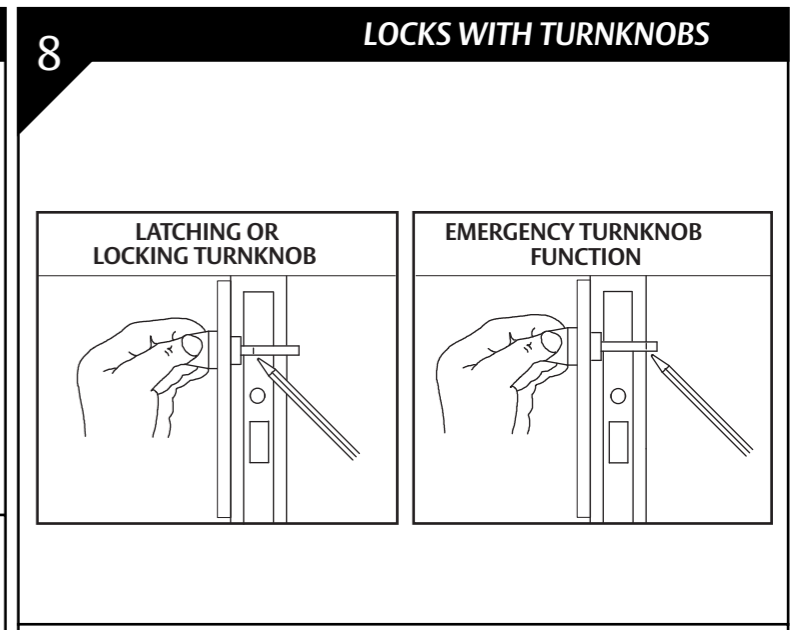
- Establish height that lockset will be mounted on door and mark centreline of door thickness on door edge.
- Place Mortise Template on door and align centreline on template with centreline on door. Secure with sticky tape.
- Mark and drill mortise to suit mortise lock depth (90mm).



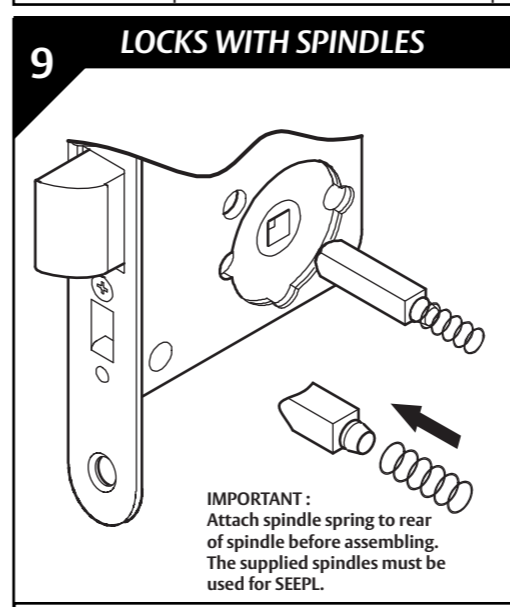
- Ease out mortise cavity where necessary. Clean out mortise before inserting lock.
- Insert lock in mortise with Cover Plate on and scribe around Cover Plate for size of recess, ensuring that no foreign matter finds its way into the lock mechanism.
- Remove lock from mortise and chisel recess 4mm deep to receive both front and cover plate. Cover plate must be flush with edge of door.
- Ensure lock is removed from mortise cavity. Fold template along backset fold line. Align EDGE A with bottom of cover plate recess. Establish holes required to suit lock function, mark hole centres accurately, drill and clean holes.
- Drill furniture holes as required.
- Fasten mortise lock into door using mounting screws provided.



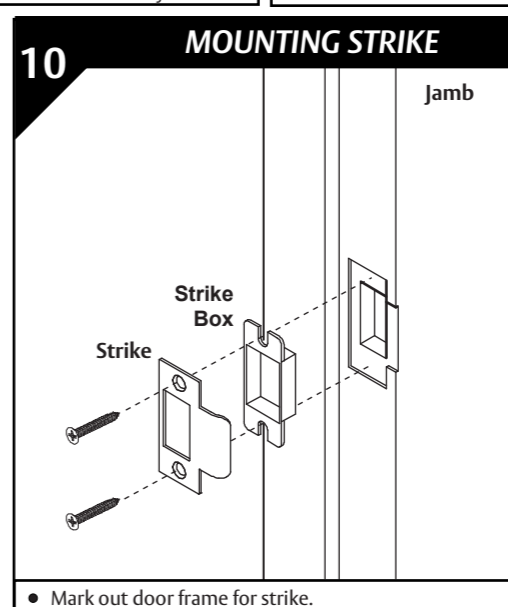
- LOCKS WITH CYLINDERS**
- Place lock in mortise and insert cylinder.
 - Secure cylinder with retainer pin, ensuring pin is flush with front plate.
 - Install Cover plate and secure with 2 M4 screws provided to lock body.
- LOCKS WITHOUT CYLINDERS**
- Install Cover plate and secure with 2 M4 screws provided to lock body.



- Mark and cut connecting bar as shown.
- Turn knob to be in the vertical position when UNLOCKED.



- All locks are supplied with spindles.
- Insert spindle(s) into lock, as required.
- Assemble furniture as required. Ensure furniture is not over-tightened.



- Mark out door frame for strike.
- Mortise door frame for strike box and strike. Bolt recess to be 15mm deep in door frame.
- Screw strike and strike box to the door frame with two screws supplied with mortise lock.