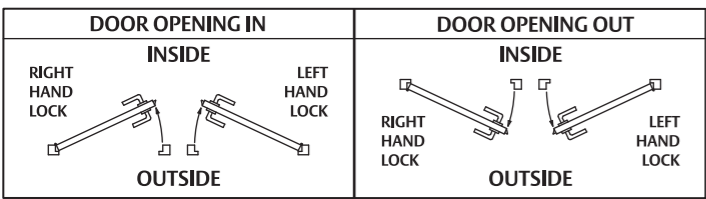


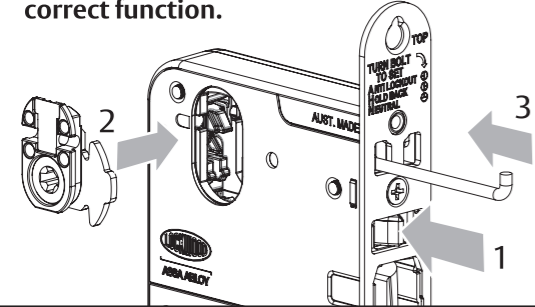
### HAND OF DOOR ACCORDING TO ENGLISH PRACTICE



- Determine hand of lock required from chart above.
- Ensure only holes required by handing, function and furniture are cut into door.
- Disregard instructions referring to features not required.
- The lock is supplied in passage mode. The hold back and anti-lockout functions are de-activated.

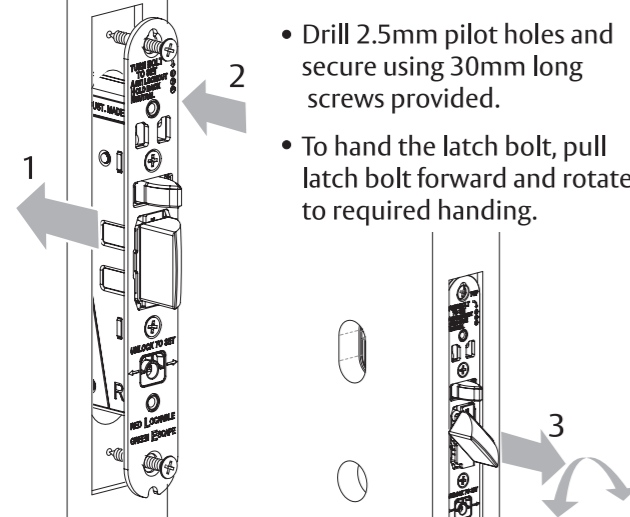
### 2 LATCHING ADAPTOR INSTALLATION

- Selector Series II mortice lock must use latching adaptor shown on the right.
- Remove cylinder plug from lock.
- Depress the latch bolt and fit the latching adaptor.
- Secure by pressing in the cylinder retaining pin.
- **Note :** The face plate must be fitted to ensure correct function.



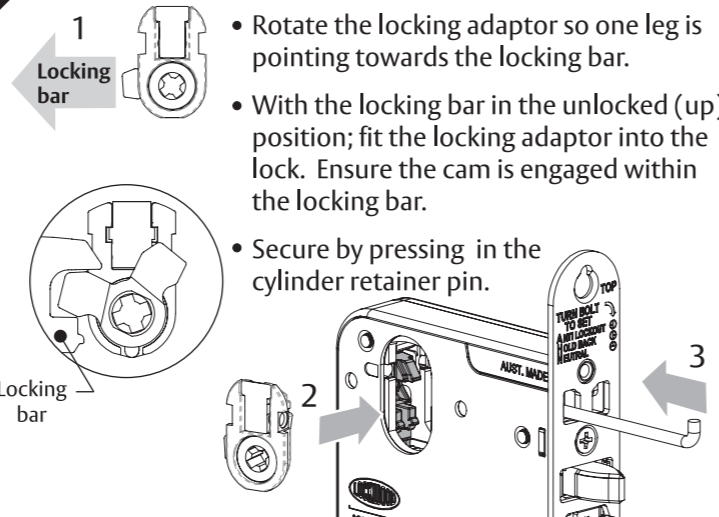
### 4 LOCK INSTALLATION

- Place lock in mortice.
- Drill 2.5mm pilot holes and secure using 30mm long screws provided.
- To hand the latch bolt, pull latch bolt forward and rotate to required handing.



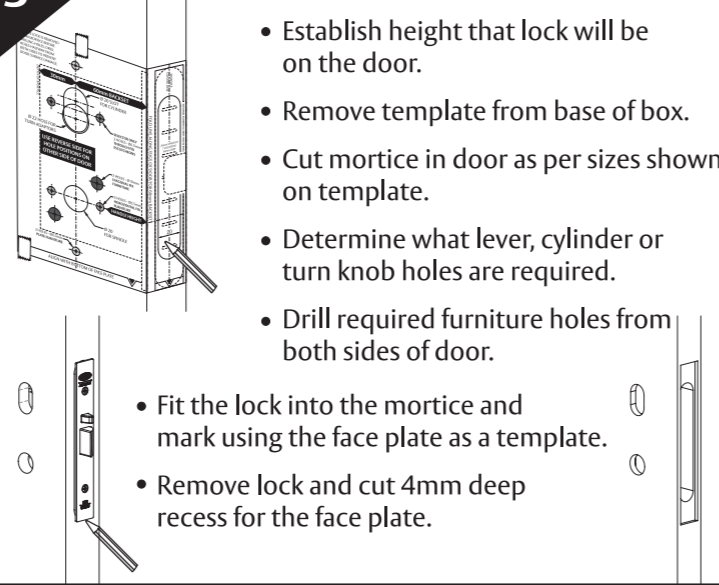
### 1 LOCKING ADAPTOR INSTALLATION

- Remove cylinder plug from lock.
- Rotate the locking adaptor so one leg is pointing towards the locking bar.
- With the locking bar in the unlocked (up) position; fit the locking adaptor into the lock. Ensure the cam is engaged within the locking bar.
- Secure by pressing in the cylinder retainer pin.



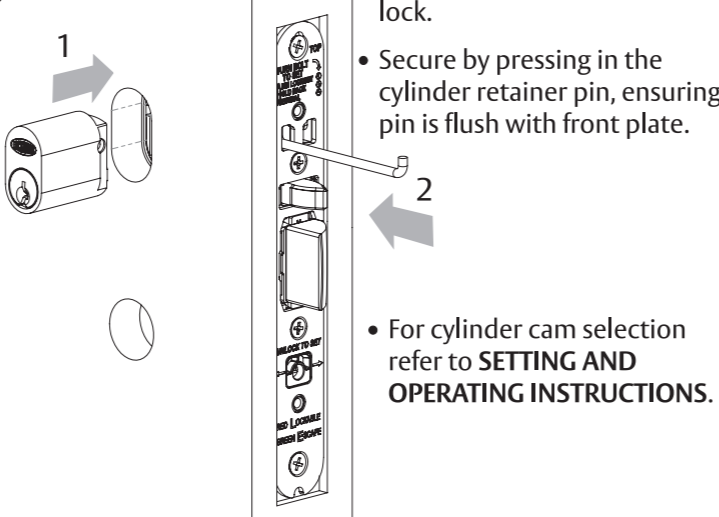
### 3 DOOR PREPARATION

- Establish height that lock will be on the door.
- Remove template from base of box.
- Cut mortice in door as per sizes shown on template.
- Determine what lever, cylinder or turn knob holes are required.
- Drill required furniture holes from both sides of door.
- Fit the lock into the mortice and mark using the face plate as a template.
- Remove lock and cut 4mm deep recess for the face plate.



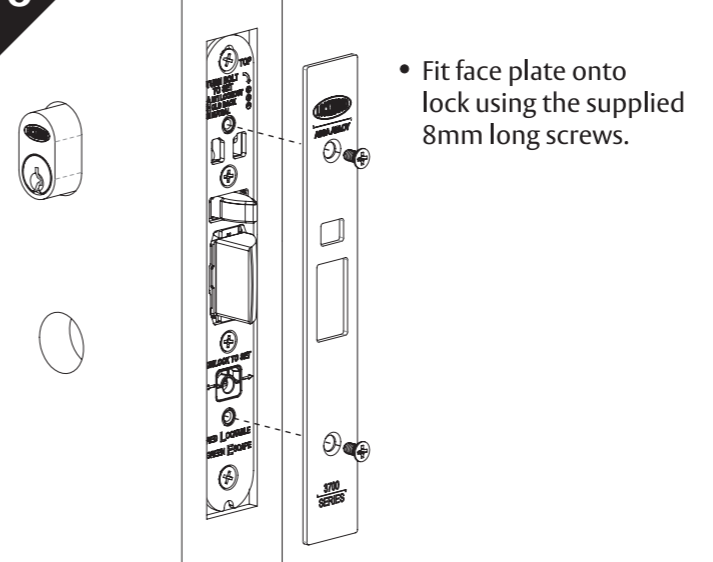
### 5 CYLINDER INSTALLATION

- Place the cylinder into the lock.
- Secure by pressing in the cylinder retainer pin, ensuring pin is flush with front plate.
- For cylinder cam selection refer to **SETTING AND OPERATING INSTRUCTIONS**.



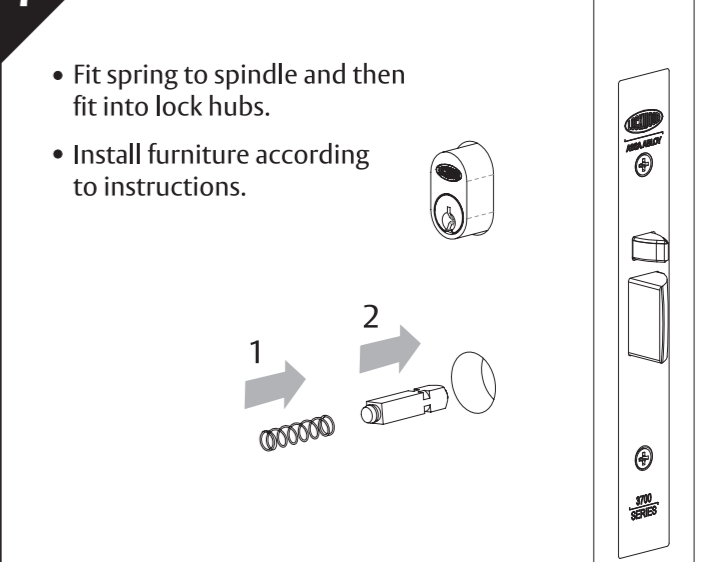
### 6 FACE PLATE INSTALLATION

- Fit face plate onto lock using the supplied 8mm long screws.



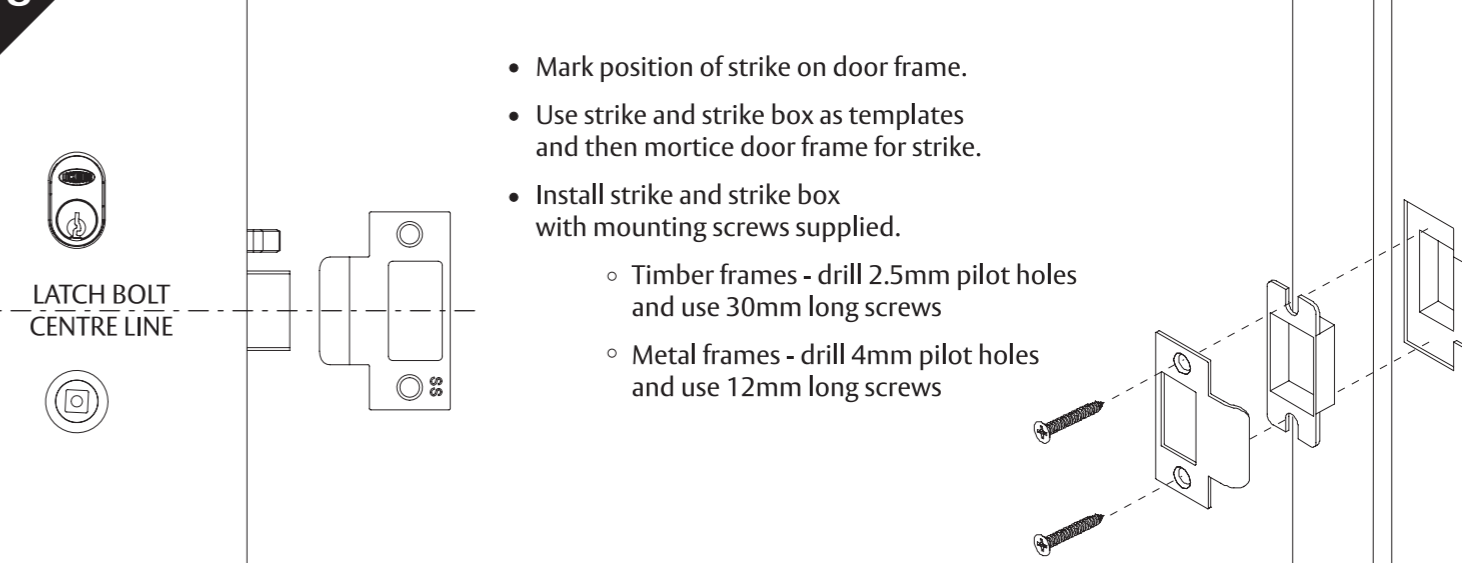
### 7 SPINDLE INSTALLATION

- Fit spring to spindle and then fit into lock hubs.
- Install furniture according to instructions.



### 8 STRIKE INSTALLATION

- Mark position of strike on door frame.
- Use strike and strike box as templates and then mortice door frame for strike.
- Install strike and strike box with mounting screws supplied.
  - Timber frames - drill 2.5mm pilot holes and use 30mm long screws
  - Metal frames - drill 4mm pilot holes and use 12mm long screws



# 3770 SERIES MORTICE LOCK

## SETTING AND OPERATING INSTRUCTIONS

# 3770 SERIES MORTICE LOCK

## FUNCTION CHART

### A

### HUB SETTING

- Ensure locking bar is in the unlocked (up) position. Hubs cannot be set while lock is locked.
- Using a 4mm flat blade screwdriver, rotate the dial until the required configuration is achieved. Dial can be rotated in either direction.
- RED** - handle is lockable. Only opened by handle when locking bar is unlocked (up).
- GREEN** - opened by handle at all times.

### B

#### CYLINDER CAM SELECTION

**X7 cam**  
Retracts the latch bolt.  
Locks the locking bar.

**V cam**  
Locks and unlocks the locking bar.  
Retracts the latch bolt after unlocking lock.

### C

#### ADAPTOR SELECTION

**Locking adaptor**  
Locks and unlocks the locking bar.  
Does not retract the latch bolt.

**Latching adaptor**  
Retracts the latch bolt.  
Does not operate the locking bar.

### D

### ANTI-LOCKOUT OR HOLDBACK SELECTION

- The anti-lockout and hold back selection is located under the latch bolt.
- Pull latch bolt forward and rotate 90°.
- Using a 4mm flat blade screwdriver, rotate to the required function.
- NOTE** : Selector can only be rotated 90° in either direction from the (N) neutral position.
- Rotate the latch bolt back to vertical ensuring the correct latch bolt handing.









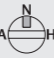




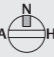


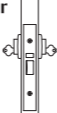


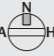


**NEUTRAL LOCK**  
Factory default.  
Lock operates as a standard lock.

**ANTI-LOCKOUT LOCK**  
Closing the door or retracting the latch bolt unlocks the lock preventing lock out situations.

**HOLD BACK LOCK**  
*Hold back must not be activated on fire doors.*  
Latch bolt can be held within the lock.

**To activate** : Depress latch bolt and lock locking bar.

**To de-activate** : Unlock locking bar

| Nightlatches   |   | Only required when using a 3772 lock  |  |  |   |   |
|--|---|---|--|--|---|---|
| Function description   |   | External cam or adaptor   | Hub setting  | Lock function setting  | Locking bar position  | Internal cam or adaptor   |
| <b>3770-T Nightlatch with turn</b><br><i>Turn knob inside.</i><br><i>Inside</i> : Opened by turn knob.   |  |   | <br>Red Red | <br>Neutral | <br>Locked | <br>Latching adaptor |
| <b>3770X- Nightlatch with cylinder</b><br><i>Single cylinder.</i><br><i>Outside</i> : Opened by key.   |  | <br>X7 | <br>Red Red | <br>Neutral | <br>Locked |   |
| <b>3770XT Nightlatch with cylinder &amp; turn</b><br><i>Cylinder and turn knob.</i><br><i>Outside</i> : Opened by key.<br><i>Inside</i> : Opened by turn knob. |  | <br>X7 | <br>Red Red | <br>Neutral | <br>Locked | <br>Latching adaptor |
| <b>3770XX Nightlatch with double cylinder</b><br><i>Double cylinder.</i><br><i>Outside</i> : Opened by key.<br><i>Inside</i> : Opened by key.                  |  | <br>X7 | <br>Red Red | <br>Neutral | <br>Locked | <br>X7               |

| Escape locks   |  | External cam or adaptor | Hub setting   | Lock function setting | Locking bar position | Internal cam or adaptor           |
|----------------|--|-------------------------|---------------|-----------------------|----------------------|-----------------------------------|
| <b>3772--</b>  | <b>Escape lock</b><br><i>Outside</i> : Handle always rigid.<br><i>Inside</i> : Opened by handle at all times.  |                         | <br>Red Green | <br>Neutral           | <br>Locked           |                                   |
| <b>3772-T</b>  | <b>Escape privacy lock</b><br><i>Emergency button and turn knob.</i><br><i>Outside</i> : Opened by handle when unlocked. Emergency button locks or unlocks outside handle - operated by screwdriver or coin.<br><i>Inside</i> : Opened by handle at all times.<br>Turn knob locks or unlocks outside handle.               |                         | <br>Red Green | <br>Neutral           | <br>Selectable       |                                   |
| <b>3772X-</b>  | <b>Key entry escape lock</b><br><i>Single cylinder.</i><br><i>Outside</i> : Opened by key at all times. Handle always rigid.<br><i>Inside</i> : Opened by handle at all times.   |                         | <br>X7        | <br>Red Green         | <br>Neutral          | <br>Locked                        |
| <b>3772XT</b>  | <b>Key entry escape lock &amp; turn</b><br><i>Cylinder and turn knob.</i><br><i>Outside</i> : Opened by key at all times. Opened by handle when unlocked. Key locks outside handle.<br><i>Inside</i> : Opened by handle at all times.<br>Turn knob locks or unlocks outside handle.  |                         | <br>X7        | <br>Red Green         | <br>Neutral          | <br>Selectable<br>Locking adaptor |
| <b>3772V-</b>  | <b>Anti-vandal escape lock</b><br><i>Single cylinder.</i><br><i>Outside</i> : Opened by handle when unlocked. Key locks or unlocks outside handle and retracts bolt after unlocking lock.<br><i>Inside</i> : Opened by handle at all times.  |                         | <br>V         | <br>Red Green         | <br>Neutral          | <br>Selectable                    |
| <b>3772VT</b>  | <b>Anti-vandal escape lock &amp; turn</b><br><i>Cylinder and turn knob.</i><br><i>Outside</i> : Opened by handle when unlocked. Key locks or unlocks outside handle and retracts bolt after unlocking lock.<br><i>Inside</i> : Opened by handle at all times.<br>Turn knob locks or unlocks outside handle.                |                         | <br>V         | <br>Red Green         | <br>Neutral          | <br>Selectable<br>Locking adaptor |
| <b>3772-TA</b> | <b>Anti-lockout escape privacy lock*</b><br><i>Emergency button and turn knob.</i><br><i>Outside</i> : Opened by handle when unlocked. Emergency button locks or unlocks outside handle - operated by screwdriver or coin.<br><i>Inside</i> : Opened by handle at all times.<br>Turn knob locks or unlocks outside handle. |                         | <br>Red Green | <br>Anti-lockout      | <br>Selectable       | <br>Locking adaptor               |
| <b>3772VTA</b> | <b>Anti-lockout anti-vandal escape lock &amp; turn*</b><br><i>Cylinder and turn knob.</i><br><i>Outside</i> : Opened by handle when unlocked. Key locks or unlocks outside handle and retracts bolt after unlocking lock.<br><i>Inside</i> : Opened by handle at all times.<br>Turn knob locks or unlocks outside handle.  |                         | <br>V         | <br>Red Green         | <br>Anti-lockout     | <br>Selectable<br>Locking adaptor |
| <b>3772XVH</b> | <b>Holdback key entry lock &amp; cylinder #</b><br><i>Double cylinder.</i><br><i>Outside</i> : Opened by key at all times. Opened by handle when unlocked. Key locks outside handle and retracts bolt after unlocking lock.  |                         | <br>X7        | <br>Red Green         | <br>Holdback         | <br>Selectable<br>V               |
| <b>3772V-H</b> | <b>Holdback anti-vandal escape lock #</b><br><i>Single cylinder.</i><br><i>Outside</i> : Opened by handle when unlocked. Key locks or unlocks outside handle and retracts bolt after unlocking lock.<br><i>Inside</i> : Opened by handle at all times.   |                         | <br>V         | <br>Red Green         | <br>Holdback         | <br>Selectable                    |

| Escape locks cont.   |                         |             |                       |                      |                         |
|--|-------------------------|-------------|-----------------------|----------------------|-------------------------|
| Function description   | External cam or adaptor | Hub setting | Lock function setting | Locking bar position | Internal cam or adaptor |
| <b>3772VTH Holdback anti-vandal escape lock &amp; turn #</b><br><i>Cylinder and turn knob.</i><br><i>Outside</i> : Opened by handle when unlocked. Key locks or unlocks outside handle and retracts bolt after unlocking lock.<br><i>Inside</i> : Opened by handle at all times.<br>Turn knob locks or unlocks outside handle. |                         |             |                       |                      |                         |

| Passage latch  |                         |             |                       |                         |
|--|-------------------------|-------------|-----------------------|-------------------------|
| Function description   | External cam or adaptor | Hub setting | Lock function setting | Internal cam or adaptor |
| <b>3774 Passage latch</b><br><i>Outside</i> : Opened by handle at all times.<br><i>Inside</i> : Opened by handle at all times. |                         |             |                       |                         |

| Combination locks  |                         |             |                       |                      |                         |
|--|-------------------------|-------------|-----------------------|----------------------|-------------------------|
| Function description   | External cam or adaptor | Hub setting | Lock function setting | Locking bar position | Internal cam or adaptor |
| <b>3774-T Privacy lock</b><br><i>Emergency button and turn knob.</i><br><i>Outside</i> : Opened by handle when unlocked. Emergency button locks or unlocks both handles - operated by screwdriver or coin.<br><i>Inside</i> : Opened by handle when unlocked. Turn knob locks or unlocks both handles.   |                         |             |                       |                      |                         |
| <b>3774XX Key entry double cylinder lock</b><br><i>Double cylinder.</i><br><i>Outside</i> : Opened by key at all times. Handle always rigid.<br><i>Inside</i> : Opened by key at all times.<br>Handle always rigid.  |                         |             |                       |                      |                         |
| <b>3774XV Key entry lock &amp; internal cylinder</b><br><i>Double cylinder.</i><br><i>Outside</i> : Opened by key at all times. Opened by handle when unlocked. Key locks both handles.<br><i>Inside</i> : Opened by handle when unlocked. Key locks or unlocks both handles and retracts bolt after unlocking lock.   |                         |             |                       |                      |                         |
| <b>3774VV Anti-vandal lock &amp; internal cylinder</b><br><i>Double cylinder.</i><br><i>Outside</i> : Opened by handle when unlocked. Key locks or unlocks both handles and retracts bolt after unlocking lock.<br><i>Inside</i> : Opened by handle when unlocked. Key locks or unlocks both handles and retracts bolt after unlocking lock.                   |                         |             |                       |                      |                         |
| <b>3774VT Anti-vandal lock &amp; turn</b><br><i>Cylinder and turn knob.</i><br><i>Outside</i> : Opened by handle when unlocked. Key locks or unlocks both handles and retracts bolt after unlocking lock.<br><i>Inside</i> : Opened by handle when unlocked. Turn knob locks or unlocks both handles.  |                         |             |                       |                      |                         |
| <b>3774-TA Anti-lockout privacy lock *</b><br><i>Emergency button and turn knob.</i><br><i>Outside</i> : Opened by handle when unlocked. Emergency button locks or unlocks both handles - operated by screwdriver or coin.<br><i>Inside</i> : Opened by handle when unlocked. Turn knob locks or unlocks both handles.   |                         |             |                       |                      |                         |
| <b>3774VVA Anti-lockout anti-vandal lock &amp; cylinder *</b><br><i>Double cylinder.</i><br><i>Outside</i> : Opened by handle when unlocked. Key locks or unlocks both handles and retracts bolt after unlocking lock.<br><i>Inside</i> : Opened by handle when unlocked. Key locks or unlocks both handles and retracts bolt after unlocking lock.            |                         |             |                       |                      |                         |
| <b>3774XVH Holdback key entry lock &amp; cylinder #</b><br><i>Double cylinder.</i><br><i>Outside</i> : Opened by key at all times. Opened by handle when unlocked. Key locks both handles and retracts bolt after unlocking lock.<br><i>Inside</i> : Opened by handle when unlocked. Key locks or unlocks both handles and retracts bolt after unlocking lock. |                         |             |                       |                      |                         |
| <b>3774VVH Holdback anti-vandal lock &amp; cylinder #</b><br><i>Double cylinder.</i><br><i>Outside</i> : Opened by handle when unlocked. Key locks or unlocks both handles and retracts bolt after unlocking lock.<br><i>Inside</i> : Opened by handle when unlocked. Key locks or unlocks both handles and retracts bolt after unlocking lock.                |                         |             |                       |                      |                         |
| <b>3774VTH Holdback anti-vandal lock &amp; turn #</b><br><i>Cylinder and turn knob.</i><br><i>Outside</i> : Opened by handle when unlocked. Key locks or unlocks both handles and retracts bolt after unlocking lock.<br><i>Inside</i> : Opened by handle when unlocked. Turn knob locks or unlocks both handles.  |                         |             |                       |                      |                         |

\* **Anti-lockout lock** - closing the door or retracting the latch bolt unlocks the lock preventing lock out situations.

# **Hold back lock** - Latch bolt can be held within the lock.  
**Hold back must not be activated on fire doors.**

