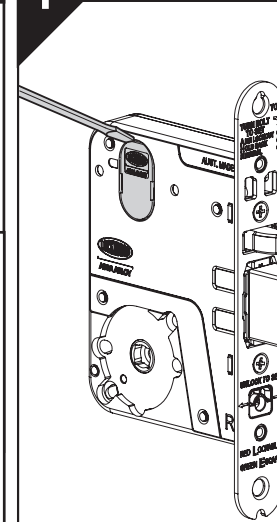
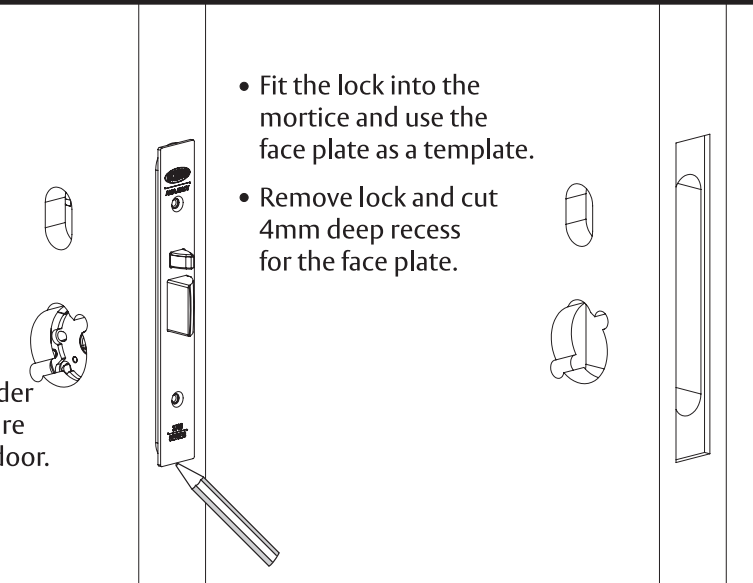


LOCK SETTING



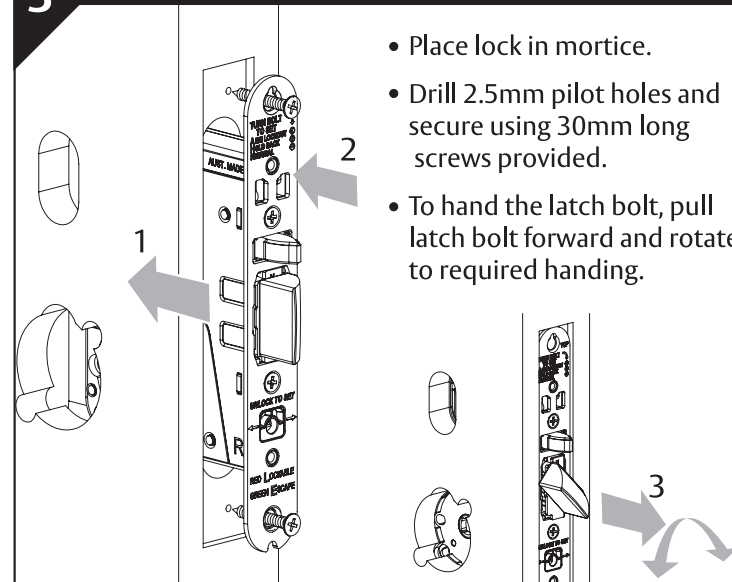
- Where cylinders or turn knobs are required, remove the cylinder plugs from the lock using a small screwdriver.
- Set the required lock function as per **SETTING AND OPERATING INSTRUCTIONS** and the **FUNCTION CHART** on the reverse of this instruction.
- Where required, refer to standard **MOUNTING INSTRUCTIONS** for cylinder or adaptor installation instructions.

DOOR PREPARATION



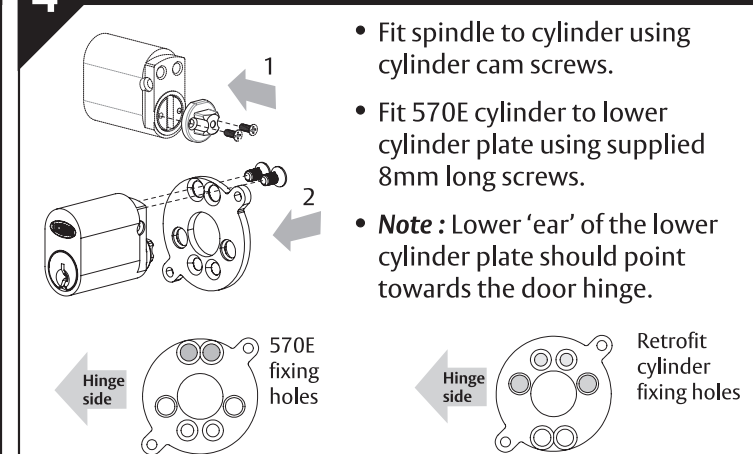
- Establish height that lock will be on the door.
- Cut mortice in door as per sizes shown on template.
- Determine what lever, cylinder or turn knob holes are required.
- Starting on the dual cylinder side, drill required furniture holes from both sides of door.

LOCK INSTALLATION

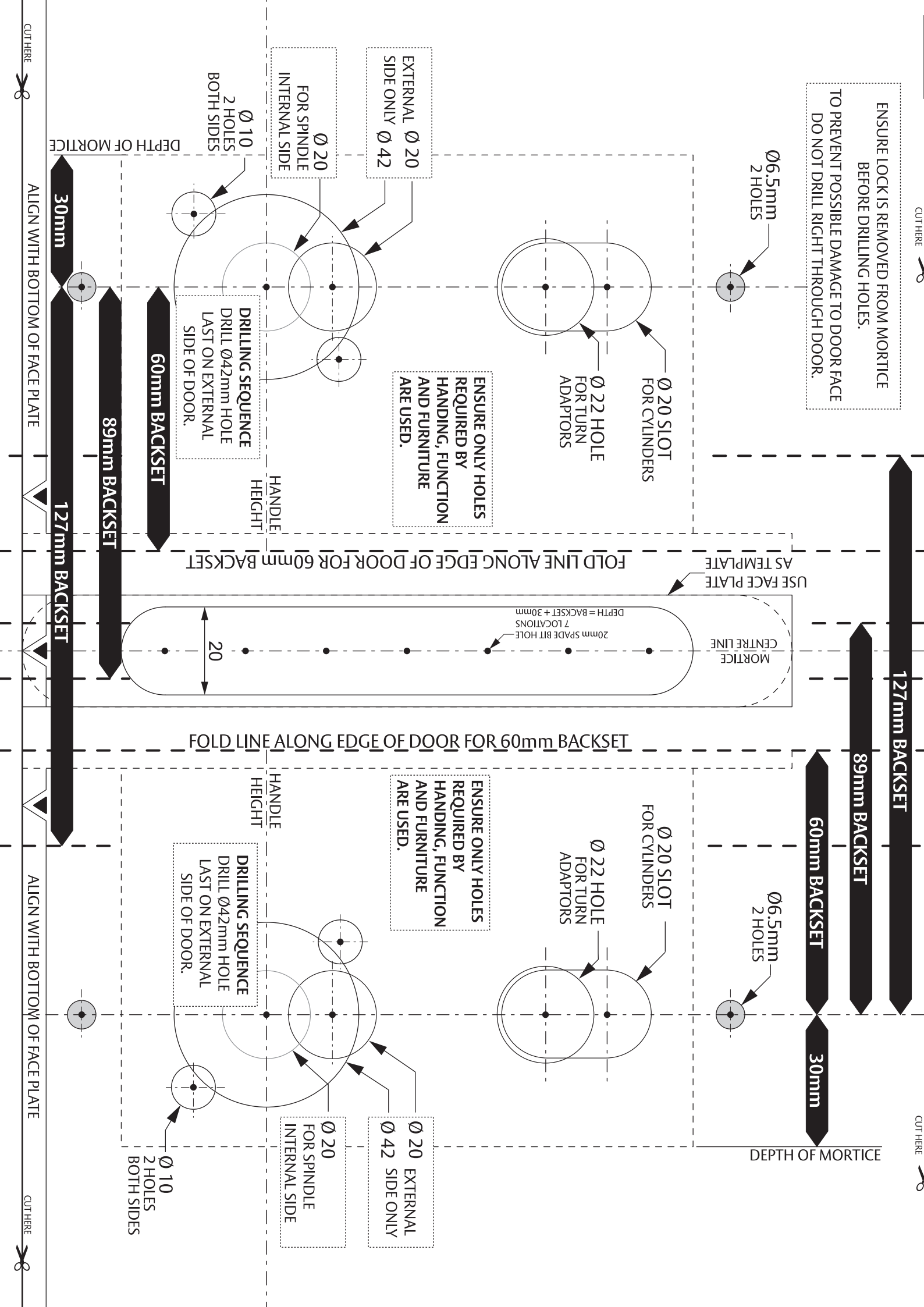


- Place lock in mortice.
- Drill 2.5mm pilot holes and secure using 30mm long screws provided.
- To hand the latch bolt, pull latch bolt forward and rotate to required handing.

LOWER CYLINDER PREPARATION



-
- 1
- 2
- 570E fixing holes
- Hinge side
- Retrofit cylinder fixing holes
- Hinge side
- Fit spindle to cylinder using cylinder cam screws.
 - Fit 570E cylinder to lower cylinder plate using supplied 8mm long screws.
 - **Note :** Lower 'ear' of the lower cylinder plate should point towards the door hinge.
- Rotate the dual cylinder mounting plate for retrofit cylinder fixing options.
 - Retrofit cylinders to be secured with existing screws.



3772 MORTICE LOCK and 3777 DUAL ENTRY KIT
MOUNTING INSTRUCTIONS FOR TIMBER DOORS

5

CYLINDER INSTALLATION

1

2

3

4

- Place the upper cylinder into the lock and secure by pressing in the cylinder retaining pin, ensuring the pin is flush with the front plate.
- Place lower cylinder assembly into lock and secure with supplied 19mm long screws from opposite side of door.

6

FACE PLATE INSTALLATION

- Fit face plate onto lock using the supplied 8mm long screws.

7

SPINDLE INSTALLATION

- On the internal side of the door, fit spring to spindle and then fit into lock hub.
- Install furniture according to instructions.

2

1

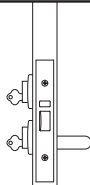
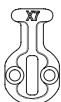

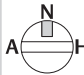

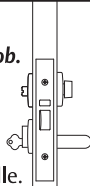

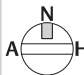

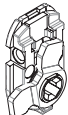
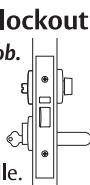

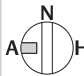

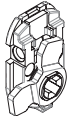
8

STRIKE INSTALLATION

- Mark position of strike on door frame.
- Use strike and strike box as templates and then mortice door frame for strike.
- Install strike and strike box with mounting screws supplied.
 - Timber frames - drill 2.5mm pilot holes and use 30mm long screws.
 - Metal frames - drill 4mm pilot holes and use 12mm long screws.

LATCH BOLT CENTRE LINE

3772 MORTICE LOCK and 3777 DUAL ENTRY KIT
FUNCTION CHART

Function description		External cam or adaptor	Hub setting	Lock function setting	Locking bar position	Internal cam or adaptor
3777X- Dual entry lock <i>Two cylinders outside.</i> <i>Outside</i> : Opened by key. Keys are keyed to differ. <i>Inside</i> : Opened by handle at all times.		 X7	 Green Green	 Neutral	 Unlocked	
3777-T Key entry privacy lock <i>Lower cylinder outside, emergency button and turn knob.</i> <i>Outside</i> : Opened by key when unlocked. Emergency button locks or unlocks outside key and inside handle - operated by screwdriver or coin. <i>Inside</i> : Opened by handle at all times. Turn knob locks or unlocks outside key and inside handle.			 Red Red	 Neutral	 Selectable	 Locking adaptor
3777-TA Key entry privacy lock with anti-lockout * <i>Lower cylinder outside, emergency button and turn knob.</i> <i>Outside</i> : Opened by key when unlocked. Emergency button locks or unlocks outside key and inside handle - operated by screwdriver or coin. <i>Inside</i> : Opened by handle at all times. Turn knob locks or unlocks outside key and inside handle.			 Red Red	 Anti-lockout	 Selectable	 Locking adaptor

* **Anti-lockout lock** - closing the door or retracting the latch bolt unlocks the lock preventing lock out situations.

